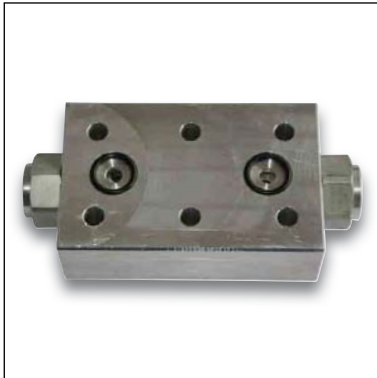
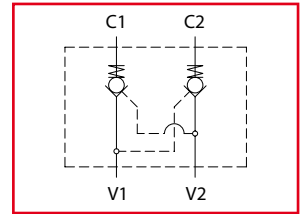


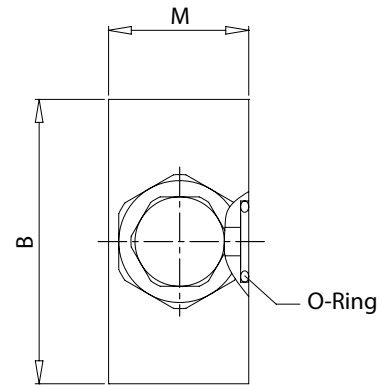
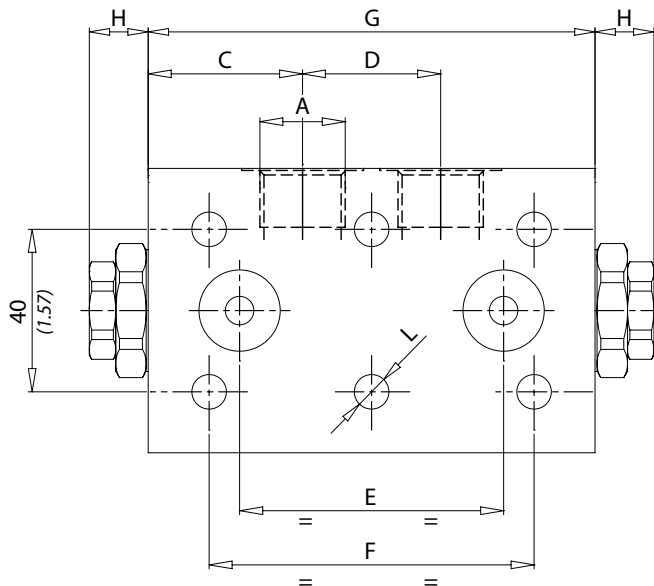
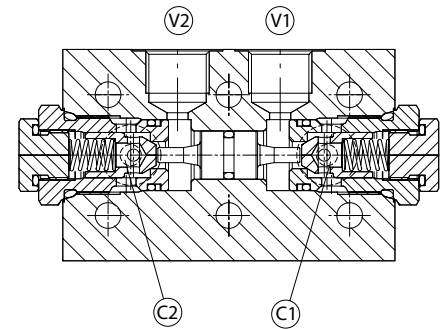


VRDF

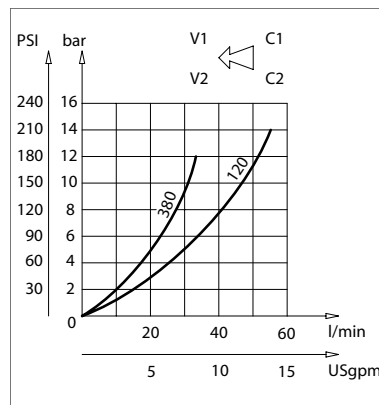
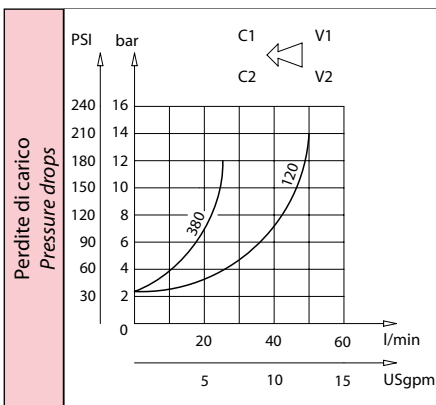
Valvola di blocco flangiata doppio effetto
Double acting pilot check valves-flanged version



Dati tecnici Technical data	
Viscosità fluido Fluid viscosity	10-500 mm ² /s 45 to 2000 ssu (6 to 420 cSt)
Classe di contaminazione Filtration	ISO code 16/13 SAE class 4 or better
Temperatura fluido Fluid temperature	-20°C +80°C -4°F +176°F
Temperatura ambiente Ambient temperature	-20°C +50°C -4°F +122°F



[mm
(Inches)]



Codice ordinazione Ordering code			
VRDF-X-Y-K			
X	Dimensione / Size	K	O-Ring sul pistone di pilotaggio O-ring on pilot piston
380	BSPP 3/8		
120	BSPP 1/2		
Y	Molla / Spring	0	No o-ring
1	1 bar Standard	1	Con o-ring With o-ring
6	6 bar		

Caratteristiche tecniche Technical performances

Codice Code	A	Portata Max Max flow l/min - USgpm	Pressione Max Max pressure bar/PSI	B	C	D	E	F	G	H	L	M	O-Ring	Peso approssimativo Approx weight Kg / lb	Rapporto di pilotaggio Pilot ratio
VRDF380	BSPP 3/8	35 (9)	210 (3000)	60 (2.36)	32 (1.26)	32 (1.26)	62 (2.44)	70 (2.76)	96 (3.78)	10 (0.39)	6.5 (0.26)	34 (1.34)	9.19 x 2.62	1,2 (2.6)	1:7
VRDF120	BSPP 1/2	50 (13)		70 (2.76)	38 (1.49)	34 (1.34)	65 (2.56)	80 (3.15)	110 (4.33)	14.5 (0.57)	8.5 (0.33)		15.54 x 2.62	1,32 (2.9)	1:3,2