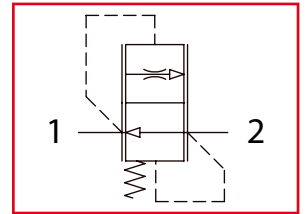


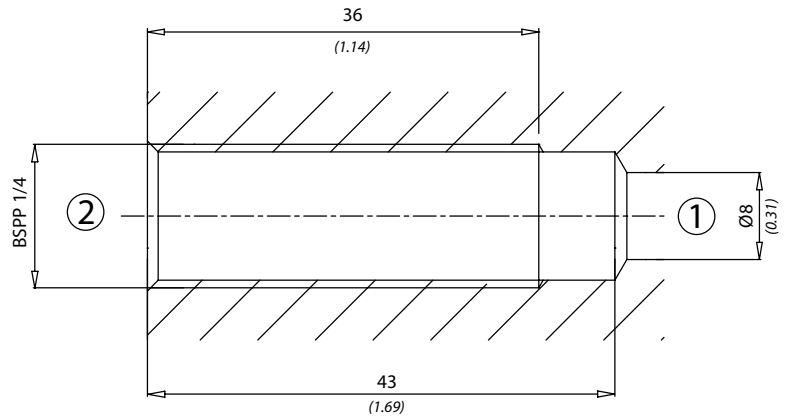
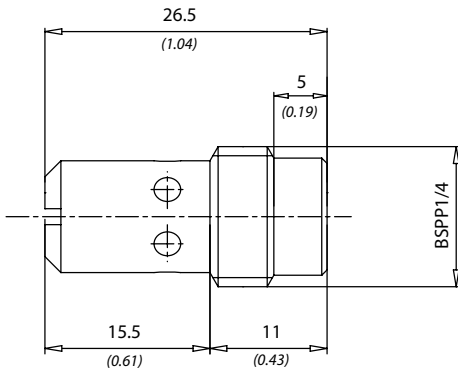
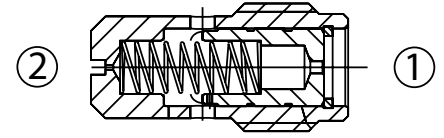


VCC140

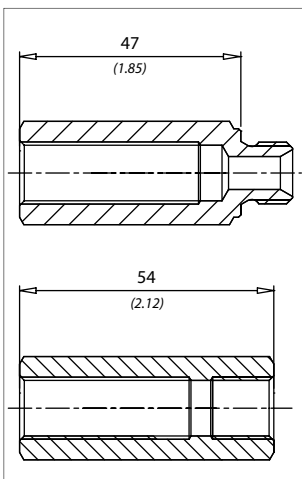
Valvole controllo discesa compensate fisse
Fixed compensated load control valves



| Dati tecnici Technical data | |
|---|--|
| Viscosità fluido Fluid viscosity | 10-500 mm ² /s 45 to 2000 ssu (6 to 420 cSt) |
| Classe di contaminazione Filtration | ISO code 16/13 SAE class 4 or better |
| Temperatura fluido Fluid temperature | -20°C +80°C -4°F +176°F |
| Temperatura ambiente Ambient temperature | -20°C +50°C -4°F +122°F |

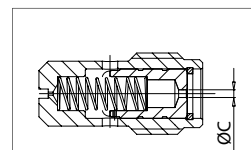


mm
(Inches)



Codice / Code
61100160

Codice / Code
61100159



| Codice Code | Ø C |
|----------------|-----------------|
| VCC1401 | Ø 1 (Ø 0.039) |
| VCC1402 | Ø 1,2 (Ø 0.047) |
| VCC1403 | Ø 1,5 (Ø 0.059) |
| VCC1404 | Ø 1,7 (Ø 0.067) |
| VCC1405 | Ø 1,9 (Ø 0.075) |
| VCC1406 | Ø 2,1 (Ø 0.083) |
| VCC1407 | Ø 2,3 (Ø 0.090) |
| VCC1408 | Ø 2,5 (Ø 0.098) |
| VCC1409 | Ø 2,7 (Ø 0.106) |
| VCC14010 | Ø 2,8 (Ø 0.110) |
| VCC14011 | Ø 2,9 (Ø 0.114) |
| VCC14012 | Ø 3 (Ø 0.118) |

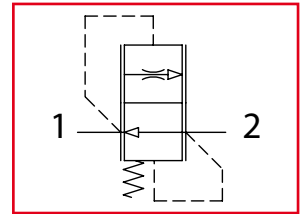
| Codice ordinazione Ordering code | |
|-------------------------------------|--|
| VCC140 - Y | |
| Y | Portata controllata a 100 bar ± 10% Controlled flow at 100 bar ± 10 % |
| 1 | 1 l/min (0.25 USgpm) |
| 2 | 2 l/min (0.5 USgpm) |
| 3 | 3 l/min (0.75 USgpm) |
| 4 | 4 l/min (1 USgpm) |
| 5 | 5 l/min (1.25 USgpm) |
| 6 | 6 l/min (1.5 USgpm) |
| 7 | 7 l/min (1.75 USgpm) |
| 8 | 8 l/min (2 USgpm) |
| 9 | 9 l/min (2.25 USgpm) |
| 10 | 10 l/min (2.5 USgpm) |
| 11 | 11 l/min (2.75 USgpm) |
| 12 | 12 l/min (3 USgpm) |

| Caratteristiche tecniche Technical performances | | | | |
|--|--|--|---|--|
| Codice Code | Portata Max Max flow l/min - USgpm | Pressione Max Max pressure bar/PSI | Peso approssimativo Approx weight Kg / lb | Coppia di serraggio (Nm) Tightening torque (lbt ft) |
| VCC140 | 12 (3) | 250 (3600) | 0,015 (0.033) | 6 (4.5) |

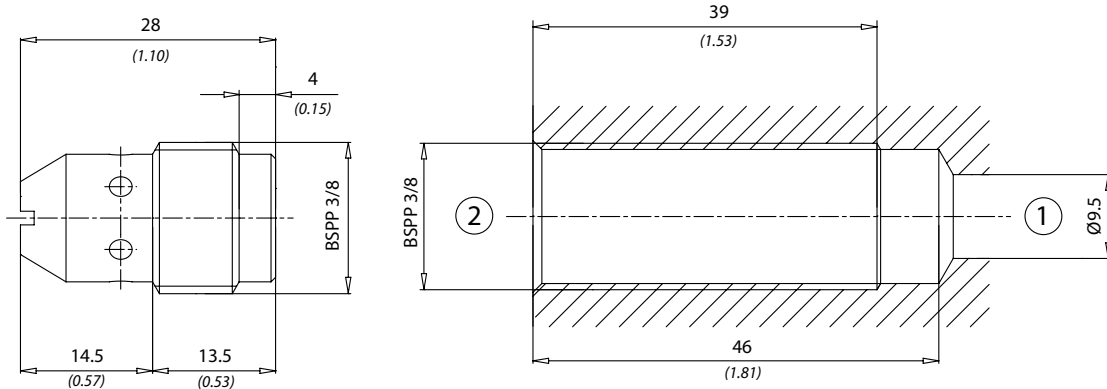
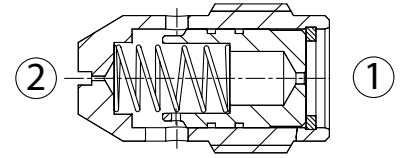


VCC380

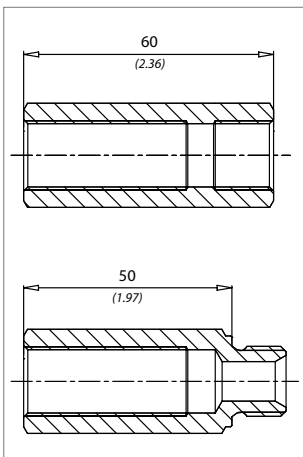
Valvole controllo discesa compensate fisse
Fixed compensated load control valves



| Dati tecnici Technical data | |
|---|--|
| Viscosità fluido Fluid viscosity | 10-500 mm ² /s 45 to 2000 ssu (6 to 420 cSt) |
| Classe di contaminazione Filtration | ISO code 16/13 SAE class 4 or better |
| Temperatura fluido Fluid temperature | -20°C +80°C -4°F +176°F |
| Temperatura ambiente Ambient temperature | -20°C +50°C -4°F +122°F |

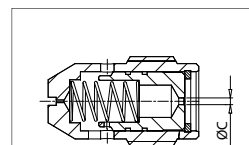


mm
(Inches)



Codice / Code
61100161

Codice / Code
61100162



| Codice Code | Ø C |
|----------------|-----------------|
| VCC3801 | Ø 0,6 (Ø 0.023) |
| VCC3802 | Ø 1,1 (Ø 0.043) |
| VCC3803 | Ø 1,5 (Ø 0.059) |
| VCC3804 | Ø 2 (Ø 0.078) |
| VCC3805 | Ø 2,2 (Ø 0.086) |
| VCC3806 | Ø 2,5 (Ø 0.098) |
| VCC3807 | Ø 2,7 (Ø 0.106) |
| VCC3808 | Ø 2,9 (Ø 0.114) |
| VCC3809 | Ø 3 (Ø 0.118) |
| VCC38010 | Ø 3,5 (Ø 0.137) |
| VCC38011 | Ø 3,6 (Ø 0.141) |
| VCC38012 | Ø 4 (Ø 0.157) |
| VCC38016 | Ø 5 (Ø 0.196) |
| VCC38018 | Ø 5,5 (Ø 0.216) |

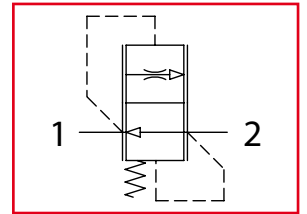
| Codice ordinazione Ordering code | |
|-------------------------------------|---|
| VCC380 - Y | |
| Y | Portata controllata a 100 bar ± 10% Controlled flow at 100 bar ± 10% |
| 1 | 1 l/min (0.25 USgpm) |
| 2 | 2 l/min (0.5 USgpm) |
| 3 | 3 l/min (0.75 USgpm) |
| 4 | 4 l/min (1 USgpm) |
| 5 | 5 l/min (1.25 USgpm) |
| 6 | 6 l/min (1.5 USgpm) |
| 7 | 7 l/min (1.75 USgpm) |
| 8 | 8 l/min (2 USgpm) |
| 9 | 9 l/min (2.25 USgpm) |
| 10 | 10 l/min (2.5 USgpm) |
| 11 | 11 l/min (2.75 USgpm) |
| 12 | 12 l/min (3 USgpm) |
| 16 | 16 l/min (4.25 USgpm) |
| 18 | 18 l/min (4.75 USgpm) |

| Caratteristiche tecniche Technical performances | | | | |
|--|--|--|---|--|
| Codice Code | Portata Max Max flow l/min - USgpm | Pressione Max Max pressure bar/PSI | Peso approssimativo Approx weight Kg / lb | Coppia di serraggio (Nm) Tightening torque (lbt ft) |
| VCC380 | 18 (5) | 250 (3600) | 0,022 (0.05) | 6 (4.5) |

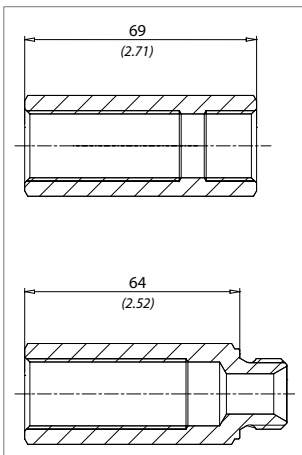
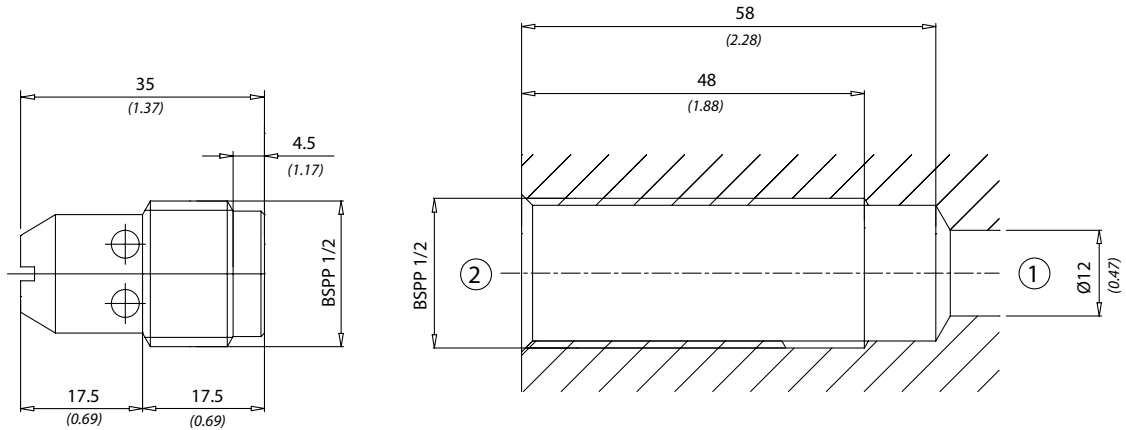
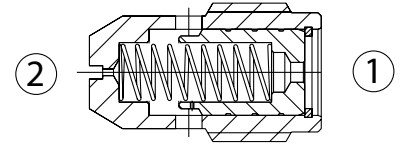


VSC120

Valvole controllo discesa compensate fisse
Fixed compensated load control valves



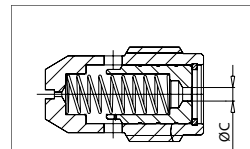
| Dati tecnici Technical data | |
|---|--|
| Viscosità fluido Fluid viscosity | 10-500 mm ² /s 45 to 2000 ssu (6 to 420 cSt) |
| Classe di contaminazione Filtration | ISO code 16/13 SAE class 4 or better |
| Temperatura fluido Fluid temperature | -20°C +80°C -4°F +176°F |
| Temperatura ambiente Ambient temperature | -20°C +50°C -4°F +122°F |



Codice / Code
61100163

Codice / Code
61100033

mm
(Inches)



| Codice Code | Ø C |
|----------------|-----------------|
| VSC1209 | Ø 2,5 (Ø 0.098) |
| VSC12012 | Ø 3 (Ø 0.118) |
| VSC12017 | Ø 3,5 (Ø 0.137) |
| VSC12021 | Ø 4 (Ø 0.157) |
| VSC12027 | Ø 4,5 (Ø 0.177) |
| VSC12032 | Ø 5 (Ø 0.196) |
| VSC12040 | Ø 5,5 (Ø 0.216) |
| VSC12047 | Ø 6 (Ø 0.236) |

| Codice ordinazione Ordering code | |
|-------------------------------------|---|
| VSC120 - Y | |
| Y | Portata controllata a 100 bar ± 10% Controlled flow at 100 bar ± 10% |
| 9 | 9 l/min (2.25 USgpm) |
| 12 | 12 l/min (3 USgpm) |
| 17 | 17 l/min (4.5 USgpm) |
| 21 | 21 l/min (5.5 USgpm) |
| 27 | 27 l/min (7 USgpm) |
| 32 | 32 l/min (8.5 USgpm) |
| 40 | 40 l/min (10.5 USgpm) |
| 47 | 47 l/min (12.5 USgpm) |

| Caratteristiche tecniche Technical performances | | | | |
|--|--|--|---|--|
| Codice Code | Portata Max Max flow l/min - USgpm | Pressione Max Max pressure bar/PSI | Peso approssimativo Approx weight Kg / lb | Coppia di serraggio (Nm) Tightening torque (lbt ft) |
| VSC120 | 47 (12) | 210 (3000) | 0,048 (0.1) | 10 (7.5) |